

# EME Spy 201

A PPM to continuously measure human exposure to EMF on predefined frequency bands

Now available in the US!



- Independent measurement on Uplink and Downlink for cellular network bands
- Real time monitoring on PC (USB) or Smartphone (Bluetooth)
- EME Spy Android Application

Watch a success story of EME Spy 140



## Main features

### User profile

- Municipalities, governmental agencies, regulatory bodies, research laboratories, universities, broadcasters, PMR, and mobile phone operators

### Measurement capabilities

- Continuous monitoring of personal exposure to electromagnetic fields and identification of the contributors

### Frequency bands

- 20 selected frequency bands from 88 MHz – 5850 MHz

### Safety recommendations

- Measurements can be compared with the reference levels advised by ICNIRP

### Real time visualization kit (optional)

- The field level for each frequency band is displayed as it is measured
- Exports data to the EME Spy Analysis software for post processing and backup

## Product Configuration

### Equipment

- EME Spy analysis software
- User manual
- USB cable
- 4 rechargeable batteries
- Battery charger
- Case
- Real time visualisation kit

### Services

- Initial calibration
- Calibration report
- Installation
- Training
- Additional calibration
- Extended warranty

■ Included □ Optional

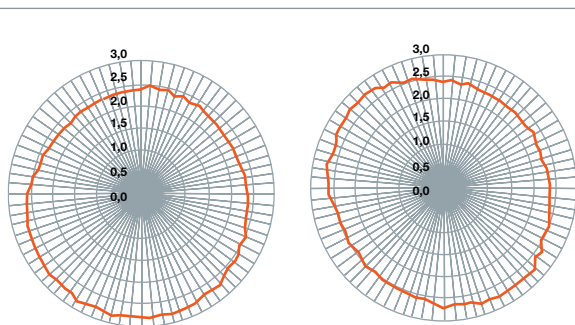
## TECHNICAL CHARACTERISTICS

### FREQUENCY RANGES

	Frequency MIN (MHz)	Frequency MAX (MHz)
FM	88	108
TV-VHF	174	216
TV-UHF	470	644
LTE Band 12 UL	698	716
LTE Band 12 DL	728	746
LTE Band 13 DL	746	756
LTE Band 13 UL	777	787
LTE Band 5 UL	824	849
LTE Band 5 DL	869	894
ISM / Smart meters	902	928
LTE Band 4 UL	1710	1755
LTE Band 2 UL	1850	1910
DECT 6.0	1920	1930
LTE Band 2 DL	1930	1990
LTE Band 4 DL	2110	2155
LTE Band 40	2300	2400
WiFi 2G	2400	2483
LTE Band 7 UL	2500	2570
LTE Band 7 DL	2620	2690
WiFi 5G	5150	5850



Differentiating uplink<sup>(1)</sup> and downlink<sup>(2)</sup> is not only useful to assess the contribution of each transmitter, but also to avoid discrepancy in the results by phones emitting close to the dosimeter.



Vertical Polarization

Horizontal Polarization

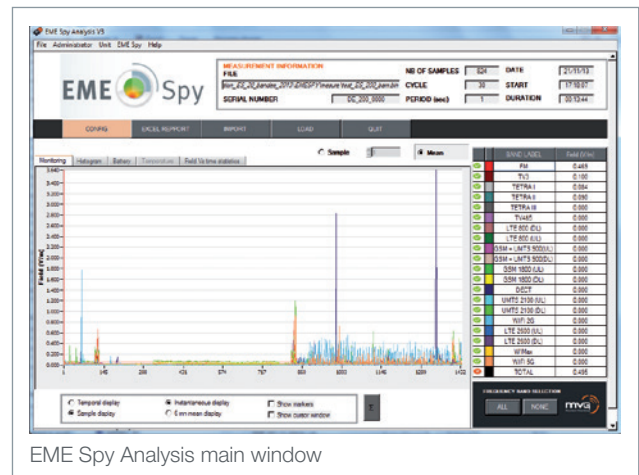
## PROBE CHARACTERISTICS

Probe	Tri-axial E-field probe 80 MHz – 6 GHz
Sensitivity	<ul style="list-style-type: none"> <li>FM, TV-VHF, WiFi 5G = 0.015 V/m</li> <li>TV-UHF, LTE Bands, WiFi 2G, ISM Smart meters, DECT = 0.005 V/m</li> </ul>
Dynamic	61.6 dB (up to 6 V/m)

- (1) Uplink: Sending of information from the mobile station to the BTS  
 (2) Downlink: Sending of information from the BTS to the mobile station

## MEASUREMENT CONFIGURATION

Number of data points	80,000 max
Logging intervals	<ul style="list-style-type: none"> <li>From 1 to 2 bands: 2 – 255s</li> <li>From 3 to 10 bands: 3 – 255s</li> <li>From 11 to 15 bands: 4 – 255s</li> <li>From 16 to 20 bands: 5 – 255s</li> </ul>



EME Spy Analysis main window

## OPERATING CONDITIONS

Temperature, humidity	-10 to 50°C, 85% of humidity
Battery life*	<p>Recording mode:</p> <ul style="list-style-type: none"> <li>&gt; 15 hours with a recording period of 10 sec</li> <li>&gt; 6 hours with a recording period of 5 sec</li> </ul> <p>Bluetooth mode:</p> <ul style="list-style-type: none"> <li>&gt; 10 hours with a measurement period of 7 sec</li> </ul>

\* 2 rechargeable batteries

## MECHANICAL CHARACTERISTICS

Dimensions	168.5 x 79 x 49.7 mm (H x L x W)
Weight	455 g
Protection	IP 55

## HARDWARE REQUIREMENTS

Processor	PC Pentium 500 MHz
Cable link	USB Port
Operating system	XP / WIN7 / WIN8
Free space on hard disc	200 MB

## EME Spy 201 Real Time Kit

A streamlined and ergonomic screen allows the visualization of only the most useful information in real time on a small laptop PC, tablet or smartphone via a ferrite USB cable (for Windows) or BlueTooth (for Android)



## EME Spy Android Application



### Viewing real-time measurements of electromagnetic field of the EME Spy.

Measurements of EME Spy are transmitted by a Bluetooth link to an Android smartphone to display the exposure levels generated by the main radio services (FM, TV, Cellular Networks, WiFi ...).

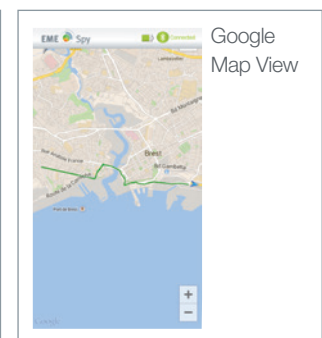
	BASIC MODE	PRO MODE
<b>Real-time display</b>	X	X
<b>Backup + post-processing of measurements for compatibility with the EME Spy Analysis software</b>		X
<b>Geo-location of the measurements with GPS position</b>		X
<b>Generation of *.kmz files for compatibility with Google Earth</b>		X

The EME Spy Android APP is certified for Smartphones below:

- Galaxy S series (Samsung)
- Xperia Neo (Sony Ericsson)
- Slim Cink (Wiko)
- XT925 (Motorola)



\* Google Earth installation required. Visit our website for more information.



## A global presence

Microwave Vision exports more than 90% of its production outside of France. The Group spans Europe, Asia and America through 20 locations in 10 countries.

### MVG Industries

17 avenue de Norvège  
91140 Villebon-sur-Yvette  
FRANCE

Tel: +33 (0)1 69 29 02 47

### MVG - Corporate HQ

47, boulevard Saint Michel  
75005 Paris  
FRANCE

Tel: +33 (0)1 75 77 58 50

### MVG Industries Bretagne

Technopole Brest Iroise,  
Z.I. du Vernis,  
225 rue Pierre Rivoalon,  
29200 Brest  
FRANCE

Tel: +33 (0)2 98 05 13 34

### Orbit/FR Germany

ORBIT/FR Germany  
J. S. Bach-Str. 11  
85591 Vaterstetten  
GERMANY

Tel: +49 (0)810 699 6060

### Orbit/FR Israel

1 Gesher Ha-Ets St.,  
P.O. Box 12096,  
Emek Hefer Industrial Park,  
38777-01 Emek Hefer  
ISRAEL

Tel: +972 74 713 0130

### MVG Italy

Via Castelli Romani, 59  
00040 Pomezia, (Rome)  
ITALY

Tel: +39 06 89 99 53 11

### Research and Production center in France



### MVG Sweden

P.O. Box 35  
44121 Alingsas  
Gothenburg  
SWEDEN

Tel: +46 31 402 430

### Rainford EMC Systems Limited

Unit 400,  
Haydock Lane,  
Haydock, WA11 9th  
UNITED KINGDOM

Tel: +44 (0)1 942 296 190

### MVG Hong-Kong

Suite 702, 7th floor  
Cyberport 1  
100 Cyberport Road  
Pok Fu Lam  
Hong Kong SAR  
CHINA

Tel: +85 229 896 128

### MVG India

N° 414 Cunnigham Road  
Level 4 Prestige Centre Point,  
560052 Bangalore  
INDIA

Tel: +91 70 22 98 12 16

### Production site in Israel



### MVG Japan

#101 Confort Musashi-  
Nakahara,  
2-10-32, Shimokodanaka,  
Nakahara-ku, Kawasaki-city  
211-0041 Kanagawa,  
JAPAN

Tel: +81 44 948 9301

### Orbit/FR's Corporate HQ

506 Prudential Road  
Horsham, PA  
19044  
UNITED STATES

Tel: +1(215) 674 5100

### MVG, Inc

2105 Barrett Park Dr.,  
Suite 104  
Kennesaw, GA 30144  
UNITED STATES

Tel: +1 678 797 9172

### AEMI

1320 Air Wing Road,  
Otay Mesa, CA 92154  
UNITED STATES

Tel: +1 (619) 449 9492



Contact your local sales representative for more information  
[salesteam@mvg-world.com](mailto:salesteam@mvg-world.com)  
[www.mvg-world.com/rfsafety](http://www.mvg-world.com/rfsafety)